

South East Tasmanian Aboriginal Corporation



ANNUAL REPORT



2015-2016



Vision Statement

The South East Tasmanian Aboriginal Corporation (SETAC) exists to secure the empowerment of the Aboriginal people of South East Tasmania so that, through self-determination, we can make decisions that affect our lives and share in Australia's land, wealth and resources, contributing equitably to the nation's economic, social and political life, with full recognition of, and support for, the ongoing enjoyment and development of our Indigenous cultural heritage.





Vision Statement.....	1
Contents.....	2
Chairpersons Report.....	3 & 4
SETAC Objectives.....	5
Board of Directors.....	6
CEO's Message.....	7 & 8
Our Organisation.....	9
SETAC Staff	10
Our Six Strategic Priorities.....	11
The Programs we run.....	12
Health Services.....	13-16
Home Assistance.....	17
Children and Families.....	18
Support Groups & Services.....	19
Community Events.....	20
Cultural Programs.....	21-22
Land Management.....	21
Learning Culture.....	22
Improvements to Buildings.....	23
Financial Report.....	24
Income and Expenditure Breakdown.....	25
Grants Received.....	26
Expenditure.....	27
Assets & Liabilities.....	28
SETAC Snapshots.....	29
Like us on Facebook.....	30



Janine Cowen

The last AGM held on Saturday 28th November 2015 was the best turnout of community members since the formation of SETAC. Fifty two community members attended the AGM. They came from Dover, Geeveston, Margate, Kingston, Woodbridge, Snug, Huonville and Cygnet.

The community elected a new Board of Directors, Rodney Dillon, Tracey Dillon, Elaine Glover, Brad Strong and myself. I was elected as Chairperson by the Board of Directors. The Board is a voluntary group who ensures the right programs and services are provided to our community with the funding we receive.

To enable the Board to get a better understanding of the viability of SETAC's financial status we employed the services of Wise Lord and Ferguson to conduct an Internal Audit of SETAC's financial situation.

The Board implemented recommendations from the Internal Audit and employed an accountant, Rachel Mendlik who is an employee of Wise Lord and Ferguson. Rachel has revamped and instigated the changes in the financial system. Rachel has ensured all financial records are correct and acquittals for the funding bodies are prepared and provided in the time frames. This has assisted the Board to get a complete understanding of SETAC's viability with regular financial reports at each board meeting, which keeps us abreast of changes which may impact on our own risk management strategies. The Board wishes to thank Rachel for her dedication and enduring long hours committing to ensure SETAC's financials and accounting practices are up to date.

Wise Lord and Ferguson have completed SETAC's 15/16 Audit report which is available for viewing at SETAC's head office.

The Board appointed a new Chief Executive Officer, Elaine Glover. All staffing positions within SETAC are now fully funded and filled. Board members participated in being on interview panels for vacant positions advertised.

On 27th October 2015 Aboriginal students from Huonville High, Kingston High and Woodbridge High participated in a full Cultural day at Fanny Cochrane's Church students was informed of the culture significance of the area and completed a traditional bark hut with the guidance of Sheldon Thomas and Tas Langford.

SETAC and Weetapoona are coming together to form a partnership in attracting more land back in our area and protecting the World Heritage areas.

SETAC participated in the Cygnet Folk festival on 8th January 2016 with the Furneaux Island 'Music around the kitchen table' performing on SETAC's Head Office lawns, Ronnie Summers sang Call Song by Fanny Cochrane. This enabled the general public to come into SETAC and gain knowledge on Aboriginal history in the area and the services SETAC provides to the community. SETAC will be participating in Folk Festival in 2017.

Board members Rodney Dillon, Brad Strong, Janine Cowen and Acting Health Care Manager Tessie Strong attend Harmony Week at Franklin Palais Theatre on 19 March 2016. Tessie Strong organised a stand advertising SETAC's services and we exchanged knowledge and interacted with a vast variety of multi-cultural groups that were in attendance.

SETAC (Tessie Strong) and Weetapoonna (Ben Sculthorpe) participated in the St James grade 9 & 10 Murrayfield Camp on 22nd to the 24th of April 2016. Students were made aware of the Aboriginal cultural significance of Murrayfield, shown the ochre quarries and mutton birding.

SETAC held a BBQ on 1st May 2016 for the community at the Primary Health Centre; this was well attended and thoroughly enjoyed by all. We foresee that many more community functions will occur.

SETAC obtained funding to undergo maintenance work at the Primary Health Centre enabling the upgrade of the bathroom facilities and industrial vinyl was replaced in the treatment room, kitchen, bathroom, and wet areas. Work was completed in the last week of June 2016.

A major step forward for the Aboriginal community was the passing of Legislation on 1st July 2016 in Tasmania regarding Eligibility for Aboriginal and Torres Strait Islander people. This Legislation brings Tasmania in line with other States in Australia.

The Board would like to thank every staff member within the Organisation for their outstanding hard work and commitment to ensure all programs and services are provided to our community.



- ◇ Unite Aboriginal people in the community of fellowship and understanding.
- ◇ Promote the development of the Aboriginal community towards achieving the common goal of self-determination.
- ◇ Empowerment of individuals to achieve excellence in education, employment and training.
- ◇ To assist Aboriginal people to gain access and equity of treatment to existing Aboriginal and non-Aboriginal services, especially health, housing and welfare services.
- ◇ To promote an awareness of, and understanding of the value and contribution of Aboriginal people to the development of Tasmania.
- ◇ To promote the granting of land rights to Tasmanian Aboriginal people.
Create business opportunities and social, cultural and economic benefits to the community.
- ◇ Create opportunities and training to facilitate successful business management and expansion.

Board of Directors



Janine Cowen
Chairperson



Rodney Dillon
Director



Elaine Glover
Director / CEO



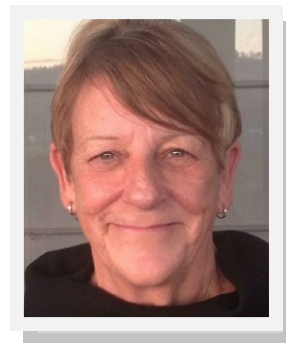
Tracey Dillon
Director



Bradley Strong
Director



Elaine Glover



This year has been one of change. The South East Tasmanian Aboriginal Corporation (SETAC) currently employs 24 people and delivers a comprehensive range of aged and primary care services from two locations.

As stated in the strategic plan “We value our history and culture, being open and honest, showing respect and developing relationship” with the community.

Our ‘Healthy Community’ approach to illness prevention continued this year. The physical activity program is well attended with the fitness instructor and the physiotherapist running sessions for groups and individuals in the General purpose room and the gymnasium.

This year we provided 2773 episodes of health care for individuals. Care was provided by, amongst others, SETAC nurses, a dietician, speech therapist, counsellor, sexual health nurse and doctor, masseur, podiatrist, physiotherapist, fitness instructor and other visiting professionals.

The outreach workers visited numerous members and worked with Women’s and Men’s groups in both Cygnet and Dover. They also managed the care group and the playgroup. Many activities were undertaken throughout the year including eating with friends at Franklin (Eldercare) and Dover. Transport was provided for some of our Aboriginal community to attend medical appointments and group activities.

SETAC now has access to the Aboriginal Legal Service which is a major milestone after not having direct access for the last few years.

SETAC is now fully utilizing a computer system already installed for wages and accounts. This has streamlined the whole process and it is much simpler than past practices and the majority of accounts and all wages are now paid electronically.

A new Medical data system was installed at the end of June 2016 ready for use in the new financial year. This system is easier to use than the previous one and 80% of the Aboriginal Organizations in Australia use the same system.

Staff development has included succession planning, multi skilling of the staff and participation in a variety of courses, for instance first aid, autism awareness, stroke awareness and so on. Our valuable carers have attended some of the development courses and this will continue in the next year.

The Aged Care Program continued throughout the year and provided assistance to 20 Community members with another 17 using the Respite services. The Home Maintenance provided assistance to 46 members of the Community, mowing lawns and general tidying outside of the individual’s premises.

These services are so valuable to be able to keep our community members in their own homes.

The strategic plan identifies the key priorities to protect and promote Aboriginal Culture and build community identity and sense of belonging. This was incorporated into such things as group activities and social gatherings such as the barbecue in May 2016.

Aboriginal culture has been promoted in the schools with an example being a bark hut built by students at Fanny Cochrane Smith's Church in Nicholls Rivulet. Students from St James College attended a camp at Murrayfield in April 2016. It was a cultural experience visiting midden sites and preparing and cooking mutton birds.

SETAC does not have funding for land management but through other avenues sites are being maintained for the use of the Community and future generations.

The church/museum at Nicholls Rivulet was closed due to possible structural problems. This has been viewed by an engineer and it is perfectly sound. After working bees on the grounds and the church it will be open again towards the end of 2016 for groups to visit.

With the funding being obtained for an Education Support Worker in June 2016 this position will support work opportunities and further education whilst incorporating Aboriginal culture into the high schools. The schools in this program are Huonville High, Dover District, Woodbridge High, Kingston High and St James College.

SETAC is moving into the social media and now has a Facebook page. This is updated regularly and it assists in keeping the community up to date with coming events.

I envisage bigger and better developments over the next twelve months for SETAC with an increase in both services and cultural awareness being delivered to the community.



BOARD OF DIRECTORS

CHIEF EXECUTIVE OFFICER

SETAC HEAD OFFICE

Home Assistance / Aged Care

Aboriginal Land and Sea Heritage
Management Issues

Financial & Administration
Services

Home Maintenance Program

Primary Health Care and Well-being Centre

Health & Well-being Programs
and Groups

Early Years Learning

Visiting Health Professionals

Community Outreach Services

Care Coordination & Supplementary
Services (CCSS) Program



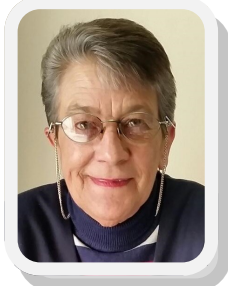
St James Cultural Excursion



SETAC Head Office



Elaine Glover
CEO



Dianne Burgess
Administration Officers



Lindy Cordwell



Heath Tatnell
Miles Ellies
Maintenance

SETAC Primary Health Care & Well-Being Centre



Tess Strong
Acting Health Care Manager



Debbie Cowen
Acting Office Supervisor / Administration

Kirsty Bunyan
Reception

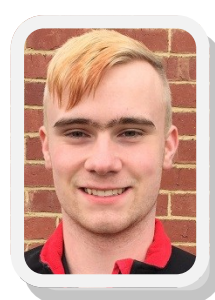
Val Maddiford
Jessica Daniels
Nurses



Julie Dunlop
Community Outreach Worker

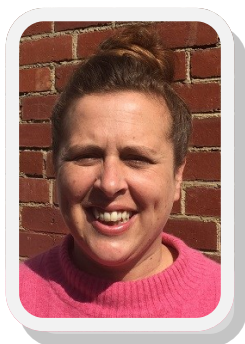


Leonie Honeychurch
Community Outreach Worker



Rhys Cordwell
Transport

SETAC NURSES

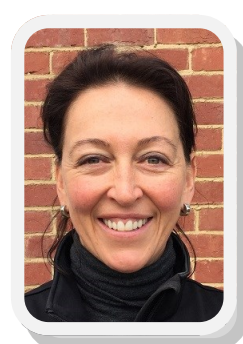


Sarah Collett
Enrolled Nurse



Katherine Lee
Registered Nurse CCSS

Anna Chernov
Registered Nurse





Our Six Strategic Priorities





Snug Falls

1:0 Health Services.....Pg 13-16

1.1 Care Coordination & Supplementary Services (CCSS)

Program.....Pg 13

1.2 Visiting Health professionals.....Pg 13

1.3 Health & Well-being Programs and Groups.....Pg 14

1.4 Fitness.....Pg 15

1.5 Aboriginal Outreach Program.....Pg 16

1.6 Transport to Medical Appointments.....Pg 16

2:0 Home Assistance / Aged Care.....Pg 17

2.1 In home personal and domestic assistance

2.2 In Home Respite care

2.3 Home Maintenance Program

3:0 Children and families.....Pg 18

3.1 Playgroup

3.3 Child health nurse

3.4 Child protection liaison

4:0 Support Groups & Services.....Pg 19

4.1 Care Group

4.2 Youth sporting clinics

5:0 Community Events.....Pg 20

6:0 Cultural Programs.....Pg 21-22

6.1 Land Management - Indigenous Protected Areas

6.2 Learning Culture



Clinics & Programs are offered to Aboriginal & Torres Strait Islander Community members.

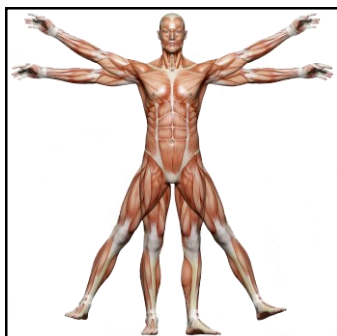
REGISTERED NURSE (RN) ENROLLED NURSE (EN) SERVICES

- ♦ Health Assessments
- ♦ Home Visits
- ♦ Blood Pressure
- ♦ Health Checks
- ♦ Blood
- ♦ Sugar Readings
- ♦ Wound Dressings
- ♦ Health Monitoring
- ♦ Advice and Referral

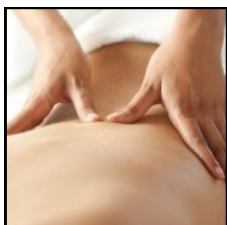
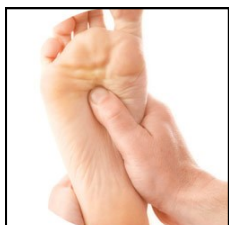
HEALTH PROFESSIONALS & SPECIALIST CLINICS

- ♦ Podiatry
- ♦ Remedial Massage
- ♦ Australian Hearing
- ♦ Diabetes Tasmania
- ♦ Family Planning Tasmania
- ♦ Dermatologist
- ♦ Mental Health Services
- ♦ Dietitian

PHYSIOTHERAPY with Alison Viner



- ♦ Gym
- ♦ Personal Assessments
- ♦ Physio Treatment



Health & Well-being Programs & Groups



Health Information Sessions

Aqua therapy



Friendship



Crafts



CYGNET

Cygnnet Men's Group

Cygnnet Women Group

FRANKLIN

Eating With Friends

DOVER

Dover Women's Group

Far South Men's Group

Eating With Friends

SNUG & KINGSTON

Eating With Friends



Social Outings

Activities



Fitness Sessions



Karen Connolly



if it does not
challenge you
then it does not
CHANGE YOU



All fitness classes cater for a wide range of fitness levels, they are fun and are offered in a relaxed social environment.

- ♥ Lower blood pressure
- ♥ Manage weight
- ♥ Improve Sleep
- ♥ Improve bone mineral density with arthritis management
- ♥ Improve cholesterol control
- ♥ Improve balance and flexibility
- ♥ Prevent Falls and injuries from falls.



- ♦ PERSONAL FITNESS TRAINING
- ♦ ZUMBA
- ♦ FITNESS CIRCUIT
- ♦ FITBALL



15



GYM SESSIONS
at the
Primary Health Care Centre
MON, WED, THURS, FRI
MORNING OR AFTERNOON



Aboriginal Outreach Program

Dover

- ♦ Podiatry
- ♦ Dietician
- ♦ Mental Health Practitioner

***Providing
Health Services
in the Region***

Geeveston

- ♦ Massage
- ♦ Podiatry
- ♦ Mental Health Practitioner
- ♦ Midwife
- ♦ CHAPS Nurse
- ♦ Dietician

Transport

***SETAC provides transport
to medical appointments.***



Snug Falls



Home Assistance

In home personal and domestic assistance

In Home Respite care

Home Maintenance Program

Assisting Community members to stay in their own home 2015-2016

Home Care Packages

Clients (maximum allocation)	20
------------------------------	----

At full capacity

Respite Care

Clients (at full capacity)	17
----------------------------	----

Home Maintenance

Clients (at full capacity)	43
----------------------------	----

Brokering

SETAC provides a brokering service (Care Forward) for clients who need both personal and domestic assistance for 6 weeks when they come home from hospital.



Snug TAS

Children and Families



Wednesdays 10am-12pm **PLAYGROUP**



Children Learn through Play

Physical Skills

Develop Cognitive Concepts

Develop Language

Develop Social Interactions

Gross & Fine Motor Skills

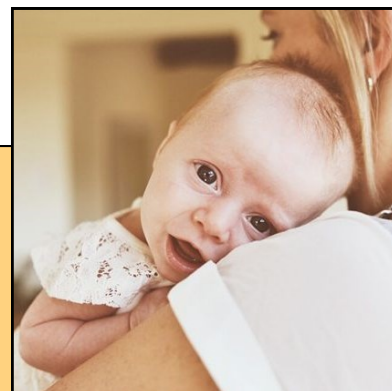
- ♦ Child protection liaison

CHAPS Child & Family Health

Available

Wednesday, Thursday, Friday

Appointments & Home Visits



- ♦ Pregnancy Support Midwife
- ♦ Free Baby Massage Classes
- ♦ Referrals for Post Pregnancy Massage



Support Groups & Services

CARE GROUP



- ♥ Outings
- ♥ Craft
- ♥ Friendship



YOUTH SPORTS CLINICS

Football Clinic
Learn To Swim

Netball Clinic
Tennis Clinic



Tennis Clinic with Yvonne Goolagong

Community Events



Cygnets Folk Festival



SETAC BBQ



SETAC Christmas Party



Christmas in June Bruny



Indigenous Protected Areas





St James Mutton Bird Cultural Excursion



Bark Hut at Fanny's Church

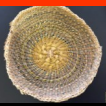


Burton & Cato Cultural Walk



NAIDOC 2015 Flag Raising

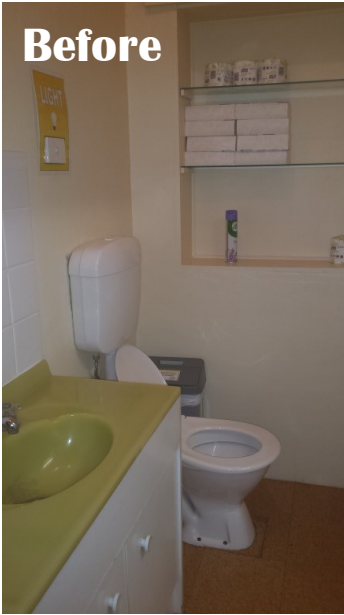
Morning Tea



Improvements to Buildings



Before

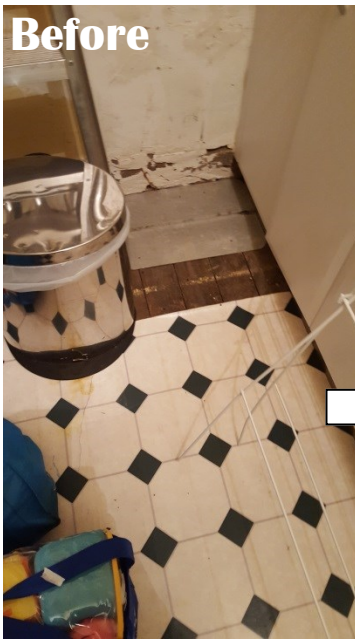


Main Bathroom

After



Before



Wet Room

After



Kitchen



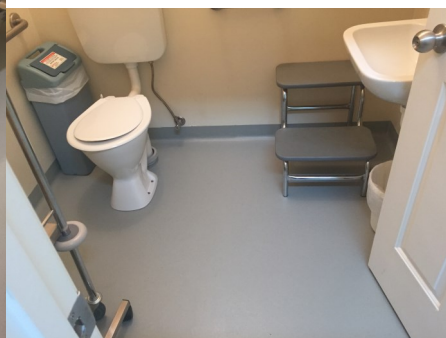
After

Before



Treatment Room

After





Auditors
Wise Lord and Ferguson
Rachel Mendlik
Accountant

- ♦ Income and Expenditure Breakdown Report 2015/2016
- ♦ Grants Received
- ♦ Expenditure
- ♦ Assets & Liabilities

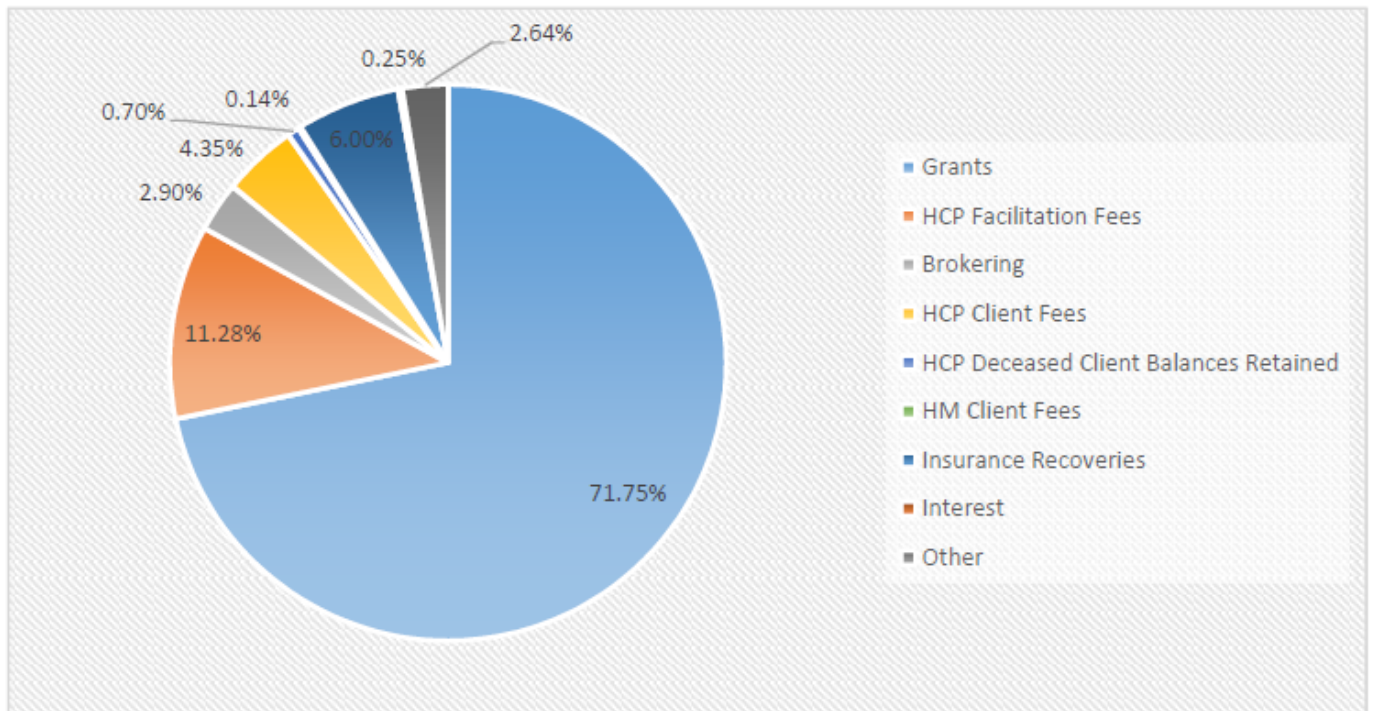


Hastings Caves



Income

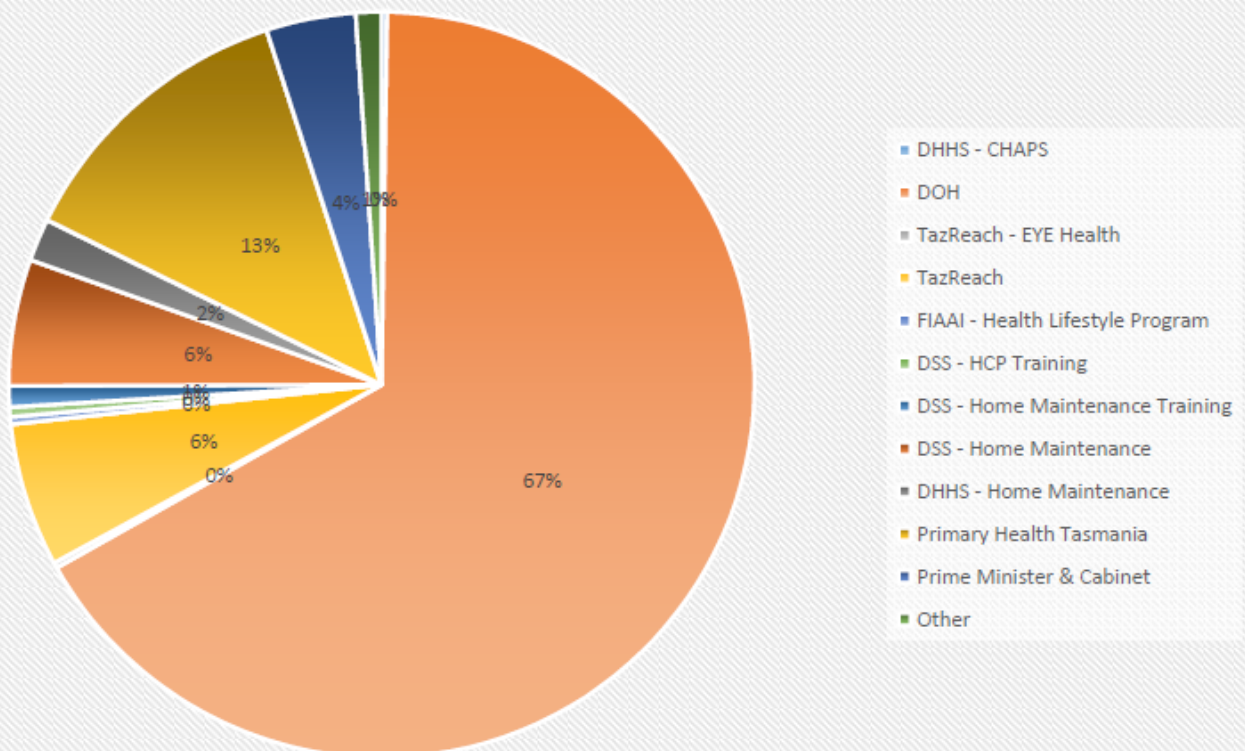
Grants	\$	1,319,166.55	71.75%
HCP Facilitation Fees	\$	207,407.71	11.28%
Brokering	\$	53,281.21	2.90%
HCP Client Fees	\$	79,945.49	4.35%
HCP Deceased Client Balances Retained	\$	12,780.99	0.70%
HM Client Fees	\$	2,576.37	0.14%
Insurance Recoveries	\$	110,336.09	6.00%
Interest	\$	4,553.38	0.25%
Other	\$	48,564.54	2.64%



Grants Received



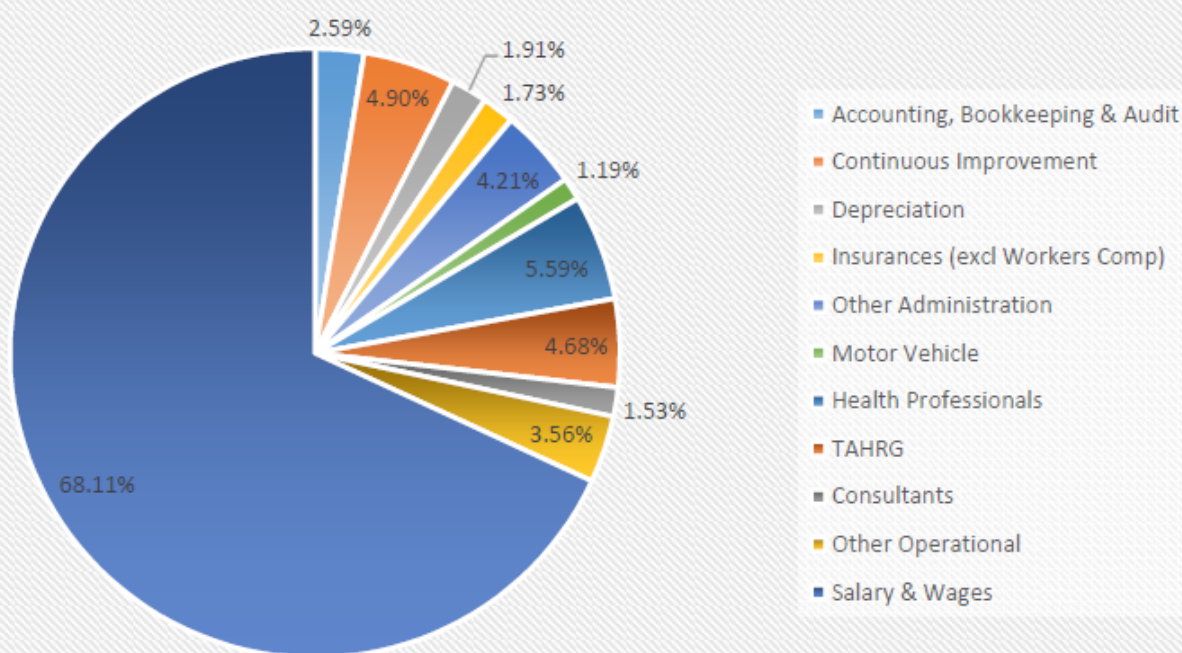
DHHS - CHAPS	\$	3,121.30	0.24%
DOH	\$	878,624.02	66.60%
TazReach - EYE Health	\$	3,000.00	0.23%
TazReach	\$	82,310.06	6.24%
FIAAI - Health Lifestyle Program	\$	4,163.64	0.32%
DSS - HCP Training	\$	5,480.00	0.42%
DSS - Home Maintenance Training	\$	12,000.00	0.91%
DSS - Home Maintenance	\$	72,368.47	5.49%
DHHS - Home Maintenance	\$	24,359.04	1.85%
Primary Health Tasmania	\$	167,818.00	12.72%
Prime Minister & Cabinet	\$	51,343.82	3.89%
Other	\$	14,578.20	1.11%





Expenditure

Accounting, Bookkeeping & Audit	\$	41,296.28	2.59%
Continuous Improvement	\$	78,071.45	4.90%
Depreciation	\$	30,414.50	1.91%
Insurances (excl Workers Comp)	\$	27,636.16	1.73%
Other Administration	\$	67,069.83	4.21%
Motor Vehicle	\$	19,016.35	1.19%
Health Professionals	\$	89,197.31	5.59%
TAHRG	\$	74,656.43	4.68%
Consultants	\$	24,414.42	1.53%
Other Operational	\$	56,722.16	3.56%
Salary & Wages	\$	1,085,999.08	68.11%





Assets

Current Assets \$ 1,089,773.33

Non-Current Assets \$ 1,000,818.13

Total Assets \$ 2,090,591.46

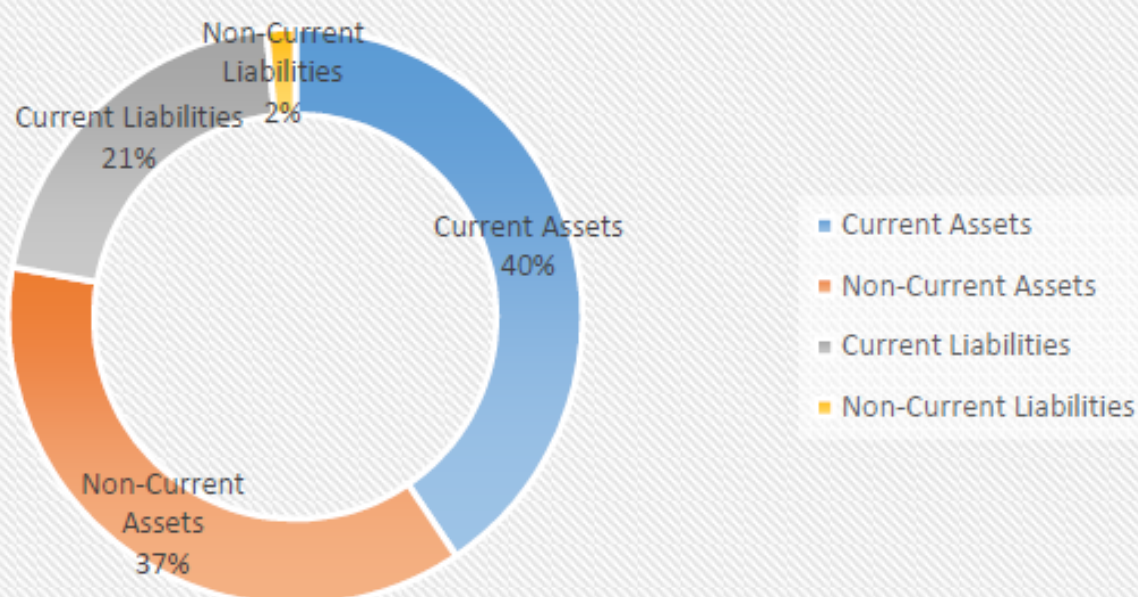
Liabilities

Current Liabilities \$ 554,750.69

Non-Current Liabilities \$ 43,450.04

Total Liabilities \$ 598,200.73

Net Assets \$ 1,492,390.73



SETAC SNAPSHOTS





Be sure to
Visit our Page
and Like us!!

**SETAC has a Facebook page to
keep Community Members
informed of Upcoming Community
and Health Events**



South East Tasmanian Aboriginal Corporation

SETAC services the communities
in Huon & Channel



SETAC

Head Office

19 Mary Street
CYGNET, TAS 7112

P: (03) 6295 0004

F: (03) 62950 535

Primary Health Care & Well-being Centre

7393 Channel Highway
Cygnet Tas 7112

P: (03) 62951 125

F: (03) 62950 752

